

Exh#

01



Mary Abbott

Bombash, 1949

Ink and gouache on paper

36"h x 30"w x 2"

Exh#

02



Nell Blaine

untitled, 1950

acrylic on paper

27 hi x 30 wide

Exh#

03



Louise Bourgeois

Point of Contact,

ca. 1967 - 1968

Bronze with black patina

5"h x 10.5"w x 6"d

Exh#

04



Dorothy Dehner

Frost, 1948

Ink, watercolor and
gouache on paper

27 x 31 x 1.5

Exh#

05



Dorothy Dehner

The Red Window, 1951

Ink and watercolor on
paper

31"h x 27"w x 1.5"

Exh#

06



Dorothy Dehner Sand,
Inland
1951,
watercolor on paper,

26 1/2 hi x 31 wide

Exh#

07



Dorothy Dehner

Untitled, 1964

Bronze

21.5"x33.5"x16.5"

Exh#

08



Dorothy Dehner

Wind and Sun, 1962

bronze sculpture

.8.5 x 23.5 x 15.5

Exh#

09



Dorothy Dehner

untitled

1967

bronze

49 hi x 23.5 wide x 10.5 deep ,

Exh#

10



Elaine de Kooning

Portrait of Bill, c. 1953

Ink on paper

28.5" x 23.5" x 1.5"

Exh#

11



Elaine de Kooning

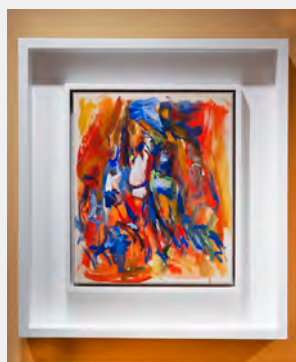
Untitled, 1948

Watercolor and paper
collage

25 x 19 x 1.5

Exh#

12



Elaine de Kooning

Basketball Players, 1960

Acrylic and gouache on
paper and mounted to
canvas

29"h x 26"w x 1.5

Exh# 13



Elaine de Kooning
Standing Bull, 1959
Mixed media on paper

22 x 26 x 3

Exh# 14



Elaine de Kooning
Untitled, c. 1965
oil on paper on canvas.

Exh# 15



Elaine de Kooning
#24 Red Oxide Wall, 1984
Acrylic and collage on
paper mounted on
canvas

49 x 39 x 2

Exh# 16



Elaine de Kooning
*Portrait of Aristodemas
Kaldis*, 1970
Oil on Canvas

41" h x 33" w x 3"

Exh#

17



Elaine de Kooning

The Baseball Catch, c.

1960's

acrylic on paper

Exhibited in the National

28 hi x 25.5 wide

Exh#

18



Perle Fine

Untitled, 1950

Oil on paper mounted on
board

20"h x 38w x 3"

Exh#

19



Audrey Flack

Weehawken Ledger, 1951

Acrylic on paper

24"h x 36"w x 1"

Exh#

20



Helen Frankenthaler

Untitled, 1976

Acrylic and crayon on
paper

43h x 35w x 2

Exh#

21



Helen Frankenthaler

Orient Express #5, 1977

Acrylic and collage on
paper

54h x 39w x 2.5"

Exh#

22



Jane Freilicher

*Landscape with Pond, c.
1970s*

gouache, watercolor and
graphite on paper

19 x 23 x 1.5"

Exh#

23



Grace Hartigan

Fantasy Study, 1965

Watercolor and collage

34"h x 26" x 1.5"

Exh#

24



Grace Hartigan

1960, untitled
oil on paper on canvas

28.5 x 22.5

Exh#

25



Lee Krasner

Earth #7, 1959

Gouache on Howell paper

19"h x 15" x 1

Exh#

26



Lee Krasner

Seed, No. 3, 1969

Gouache on Howell paper

14x17x1

Exh#

27



Lee Krasner (1911-1984)

September Twenty-third, 1980

Ink, crayon and collage
on lithographic paper

47 x 38 x 2.5

Exh#

28



Lee Krasner (1911-1984)

September Twenty-third, 1980

Ink, crayon and collage
on lithographic paper

47 x 38 x 2.5

Exh#

29



Mercedes Matter

Lee Krasner (modeling at
a Hans Hoffman drawing
class), c. 1945

Charcoal on paper

35 x 26 ½ x 1

Exh#

30



Joan Mitchell

Untitled, c. 1955

Ink on paper

36 ½ " x 31 x 1

Exh#

31



Louise Nevelson

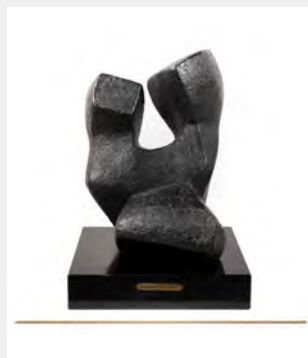
Homage to Edith Sitwell,
c. 1966

Box construction—wood
painted black and glass

21 x 15 x 11 ¾ in.

Exh#

32



Louise Nevelson

Abstract Composition, ca.
1945

Black plaster on a wood
base

15"h x 10"w x 11"d

Exh# 33



Louise Nevelson

Dancer, 1946

Sculpture - Black painted plaster on a wood base

16"h x 17"w x 8"d

Exh# 34



Louise Nevelson

Untitled, c. 1970

wood and cardboard construction on wood.

27 x 31 x 1.5

Exh# 35



Charlotte Park

Untitled, c. 1970

Oil on canvas

30h x 26w x 1d

Exh# 36



Irene Rice Pereira

Light for the Eye, 1959

gouache on rice paper

42.5 x 31.5 x 1.5

Exh# 37



Irene Rice Pereira

*As In An Entrance the
Wind Spreads It's Hand
to Entice the Water's
Flow, 1959*

42.5h x 31.5w x 1.5

Exh# 38



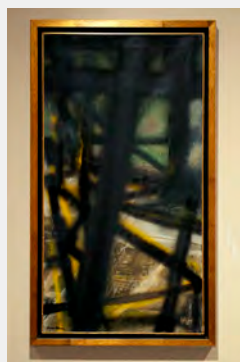
Ethel Schwabacher

Untitled, 1956

Gouache on paper

18 x 14.5 x 1

Exh# 39



Hedda Sterne

Untitled, 1955

Oil on canvas

42.5 x 24.5 x 1.75

Exh# 40



Hedda Sterne

Untitled, c. 1955

Oil on canvas

37 x 31.5 x 1

Exh#

41



Michael West

Michael, c. 1958

Double-sided with stand

Oil on paper

40.4"h x 39"w x 8

Exh#

42



Michael West

Still Life, 1957

Oil on canvas

35h x 49w x 3.5

Exh#

43



Jane Wilson

Dawn at Hayground, n.d.

Oil on canvas

40"h x 29"w x 2.5